

Read Naturally Encore II

# Keeping Students Challenged

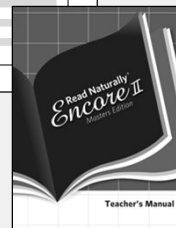


## Materials Check

Keeping Students Challenged

Webinar Handout

Teacher's Manual



## Monitoring Student Performance

Use student data to:

- Check the student's initial placement after three stories.
- Keep the student challenged over time.



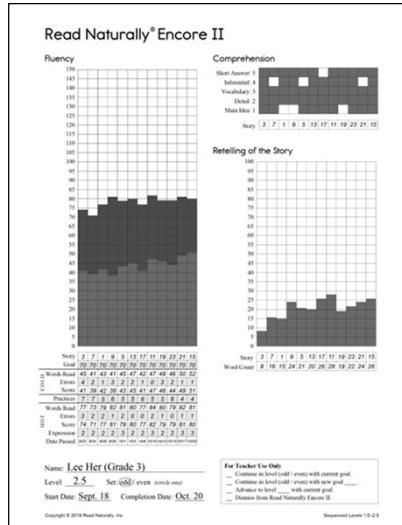
## Monitoring Student Performance

Create ongoing challenge to maximize achievement:

- The student should be challenged, but not frustrated, by the level of text difficulty.
- The student should be able to reach the goal—not easily, but with effort.



## Review Student Data After 12 Stories



Read Naturally Encore II Graph

## Indicators for Increasing Challenge

Consider making a change if a student meets two or more of the following indicators:

- Average cold-timing score improves.
- Average hot-timing score improves.
- Average quiz score improves.
- Average hot-timing score exceeds goal by ten or more.
- Average number of practices decreases.
- Student behavior changes.

## When Increasing Challenge



- Raise only one element at a time.
- After 12 stories, typically raise the goal.
- After 24 stories, typically raise the level.
- Consider the long-term fluency benchmark goal.

## Long-Term Fluency Benchmark Goal

The student is able to read unpracticed, grade-level passages at, near, or above the 50th percentile on national norms.



## Long-Term Fluency Benchmark Goal

### 50<sup>th</sup> Percentile Oral Reading Fluency Norms

Grade	Fall WCPM* ↓	Winter WCPM	Spring WCPM ↓
1	--	29	60
2	50	84	100
3	83	97	112
4	94	120	133
5	121	133	146
6	132	145	146

Hasbrouck, J., & Tindal, G. A. (2017)

\*WCPM = words correct per minute

## Does Lee need more challenge?

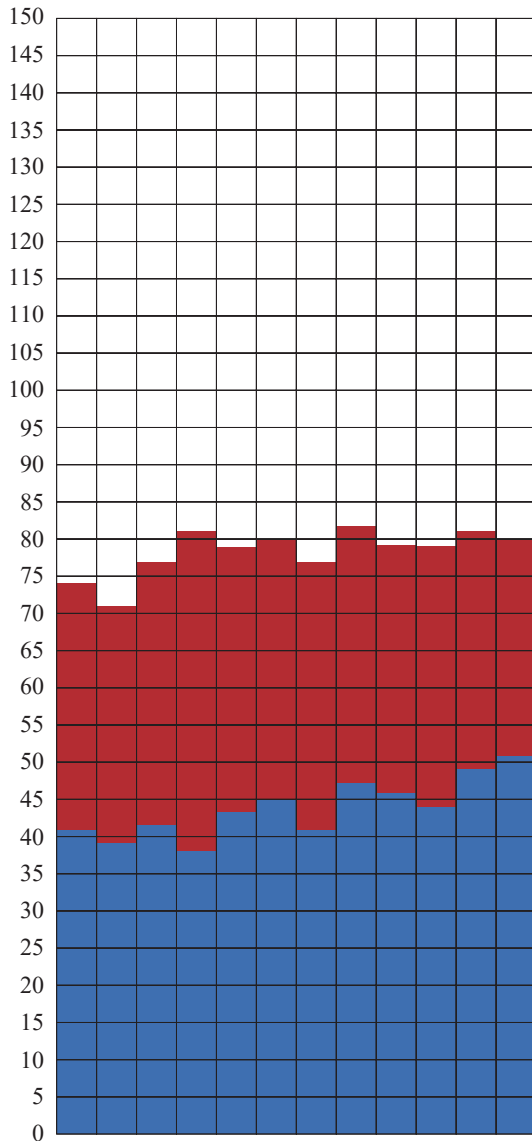


### Ask:

- Has Lee's average cold-timing score improved?
- Has Lee's average hot-timing score improved?
- Has Lee's average hot-timing score exceeded his goal by ten or more?
- Has Lee's average quiz score improved?
- Has Lee's average number of practices decreased?

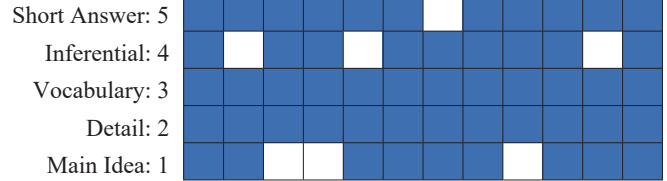
# Read Naturally® Encore II

## Fluency



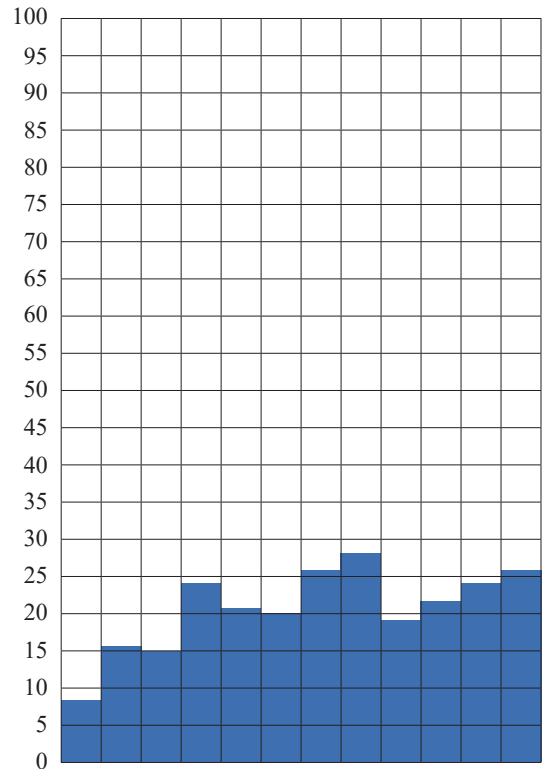
Story	3	7	1	9	5	13	17	11	19	23	21	15	
Goal	70	70	70	70	70	70	70	70	70	70	70	70	
COLD	Words Read	45	41	43	41	45	47	42	47	49	46	50	52
	Errors	4	2	1	3	2	2	1	0	3	2	1	1
	Score	41	39	42	38	43	45	41	47	46	44	49	51
Practices	7	7	5	6	5	5	6	5	5	6	4	4	
HOT	Words Read	77	73	79	82	81	80	77	84	80	79	82	81
	Errors	3	2	2	1	2	0	0	2	1	0	1	1
	Score	74	71	77	81	79	80	77	82	79	79	81	80
	Expression	2	2	2	2	3	2	2	3	2	2	3	3
Date Passed	9/22	9/24	9/26	9/29	10/1	10/3	10/6	10/10	10/13	10/15	10/17	10/20	

## Comprehension



Story	3	7	1	9	5	13	17	11	19	23	21	15
-------	---	---	---	---	---	----	----	----	----	----	----	----

## Retelling of the Story



Story	3	7	1	9	5	13	17	11	19	23	21	15
Word Count	8	16	15	24	21	20	26	28	19	22	24	26

Name: Lee Her (Grade 3)

Level: 2.5 Set: (odd) / even (circle one)

Start Date: Sept. 18 Completion Date: Oct. 20

### For Teacher Use Only

- Continue in level (odd / even) with current goal.
- Continue in level (odd / even) with new goal \_\_\_\_.
- Advance to level \_\_\_\_ with current goal.
- Dismiss from Read Naturally Encore II.

Monitoring Student Performance

## Does Lee need more challenge?

	Story	3	7	1	9	5	13	17	11	19	23	21	15
	Goal	70	70	70	70	70	70	70	70	70	70	70	70
COLD	Words Read	45	41	43	41	45	47	42	47	49	46	50	52
	Errors	4	2	1	3	2	2	1	0	3	2	1	1
	Score	41	39	42	38	43	45	41	47	46	44	49	51
	Practices	7	7	5	6	5	5	6	5	5	6	4	4
HOT	Words Read	77	73	79	82	81	80	77	84	80	79	82	81
	Errors	3	2	2	1	2	0	0	2	1	0	1	1
	Score	74	71	77	81	79	80	77	82	79	79	81	80
	Expression	2	2	2	2	3	2	2	3	2	2	3	3
	Date Passed	9/22	9/24	9/26	9/29	10/1	10/3	10/6	10/10	10/13	10/15	10/17	10/20

### Comprehension

Short Answer: 5													
Inferential: 4													
Vocabulary: 3													
Detail: 2													
Main Idea: 1													
Story	3	7	1	9	5	13	17	11	19	23	21	15	

Name: Lee Her (Grade 3)

Level: 2.5 Set: odd / even (circle one)

Start Date: Sept. 18 Completion Date: Oct. 20

Does Lee need more challenge?

Monitoring Student Performance

## Should we raise Lee's goal or level?



### Ask:

- Has Lee completed 12 or 24 stories in the level?
- What is Lee's long-term benchmark fluency goal?
- Is Lee closer to meeting his long-term benchmark rate or level?

Monitoring Student Performance

## Should we raise Lee's goal or level?

Story	3	7	1	9	5	13	17	11	19	23	21	15	
Goal	70	70	70	70	70	70	70	70	70	70	70	70	
COLD	Words Read	45	41	43	41	45	47	42	47	49	46	50	52
	Errors	4	2	1	3	2	2	1	0	3	2	1	1
	Score	41	39	42	38	43	45	41	47	46	44	49	51
Practices	7	7	5	6	5	5	6	5	5	6	4	4	
HOT	Words Read	77	73	79	82	81	80	77	84	80	79	82	81
	Errors	3	2	2	1	2	0	0	2	1	0	1	1
	Score	74	71	77	81	79	80	77	82	79	79	81	80
	Expression	2	2	2	2	3	2	2	3	2	2	3	3
	Date Passed	9/22	9/24	9/26	9/29	10/1	10/3	10/6	10/10	10/13	10/15	10/17	10/20

Should we raise Lee's goal or level?

Name: Lee Her (Grade 3)

Level: 2.5 Set:  odd  even (circle one)

Start Date: Sept. 18 Completion Date: Oct. 20

50 <sup>th</sup> %ile ORF	Grade	Fall WCPM	Winter WCPM	Spring WCPM
	3	83	97	112

Monitoring Student Performance

## Guidelines for Raising Goal or Level

- Raise the goal by 10 words.
- Raise the level by half a year (rarely by a whole year).
- Discuss the change with the student.





## What is Lee's new goal?



Previous goal: 70

New goal:

## Is Lee ready to exit Read Naturally Encore II?



- Benchmark Assessment Data  
Fall: 36 wcpm  
Winter: 65 wcpm  
Spring: 85 wcpm
- Read Naturally Encore II Data  
Spring level: 3.5  
Average cold timing: 80 wcpm  
Average hot timing: 114 wcpm

50<sup>th</sup> %ile Oral Reading Fluency Norms

Grade	Fall WCPM	Winter WCPM	Spring WCPM
3	83	97	112

## Troubleshooting Student Performance

- Require students to complete steps correctly.
- Make a program adjustment.
- Apply classroom management.
- Provide supplementary instruction.
- Adjust level or goal.



Do these students need more challenge?  
What should we change?



Jeff



John



Janelle

## Does Jeff need more challenge?



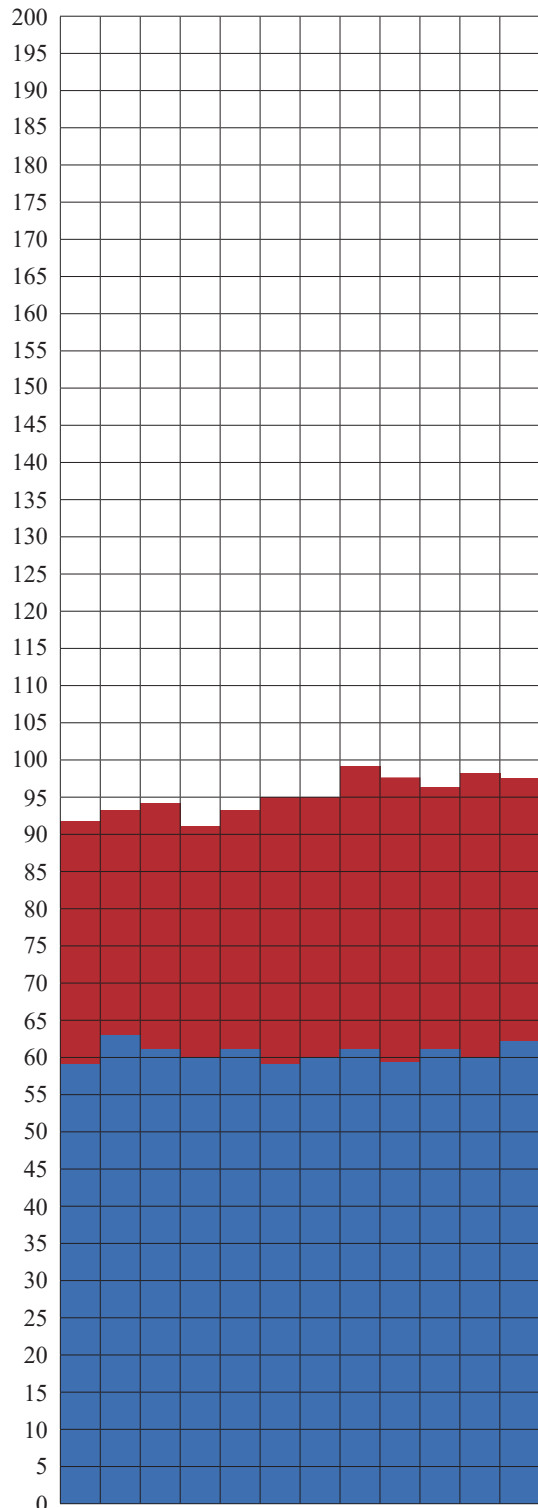
Jeff  
3<sup>rd</sup> Grade

Ask:

- Has Jeff's average cold-timing score improved?
- Has Jeff's average hot-timing score improved?
- Has Jeff's average hot-timing score exceeded his goal by ten or more?
- Has Jeff's average quiz score improved?
- Has Jeff's average number of practices decreased?

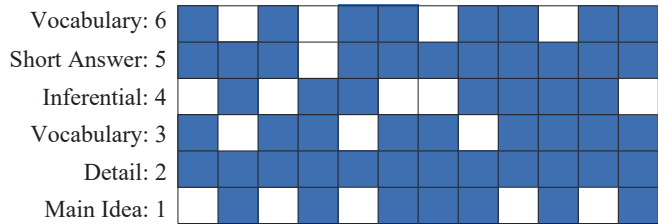
Note: Self-times for cold timing. Has a positive attitude and works well.

# Fluency



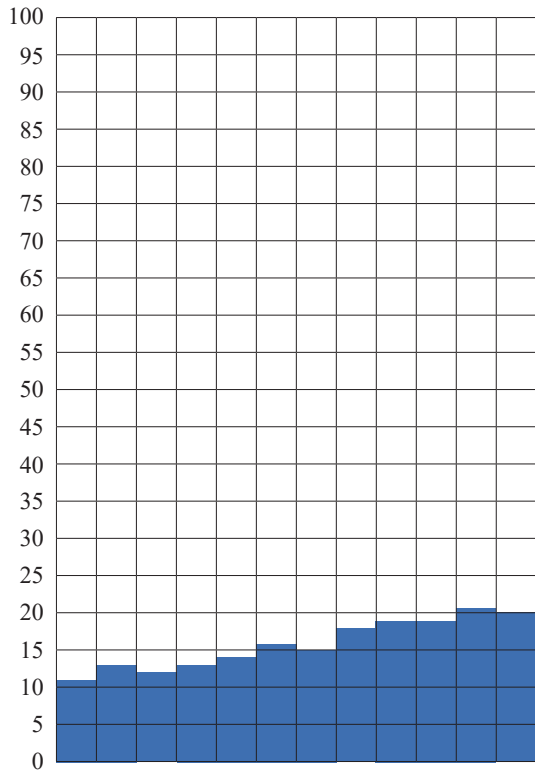
# Read Naturally® Encore II

## Comprehension



Story	7	15	1	9	19	3	23	11	17	5	21	13
-------	---	----	---	---	----	---	----	----	----	---	----	----

## Retelling of the Story



Story	7	15	1	9	19	3	23	11	17	5	21	13
Word Count	11	13	12	13	14	16	15	18	19	19	21	20

Name: Jeff Smith (Grade 3)

Level: 3.0 Set:  odd /  even (circle one)

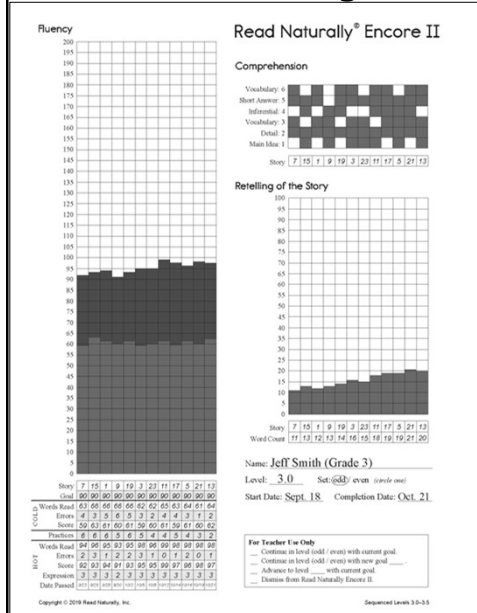
Start Date: Sept. 18 Completion Date: Oct. 21

	Story	7	15	1	9	19	3	23	11	17	5	21	13
	Goal	90	90	90	90	90	90	90	90	90	90	90	90
COLD	Words Read	63	66	66	66	66	62	62	65	63	64	61	64
	Errors	4	3	5	6	5	3	2	4	4	3	1	2
	Score	59	63	61	60	61	59	60	61	59	61	60	62
	Practices	6	6	6	5	6	5	4	4	5	4	3	2
HOT	Words Read	94	96	95	93	95	98	96	99	98	98	98	98
	Errors	2	3	1	2	2	3	1	0	1	2	0	1
	Score	92	93	94	91	93	95	95	99	97	96	98	97
	Expression	3	3	3	2	3	3	3	3	3	3	3	3
	Date Passed	9/23	9/25	9/28	9/30	10/2	10/5	10/8	10/12	10/14	10/16	10/19	10/21

### For Teacher Use Only

- Continue in level (odd / even) with current goal.
- Continue in level (odd / even) with new goal \_\_\_\_ .
- Advance to level \_\_\_\_ with current goal.
- Dismiss from Read Naturally Encore II.

## Does Jeff need more challenge?



Ask:

- Has Jeff's average cold-timing score improved?
- Has Jeff's average hot-timing score improved?
- Has Jeff's average hot-timing score exceeded his goal by ten or more?
- Has Jeff's average quiz score improved?
- Has Jeff's average number of practices decreased?

## Monitoring Student Performance

### Should we raise Jeff's goal or level?



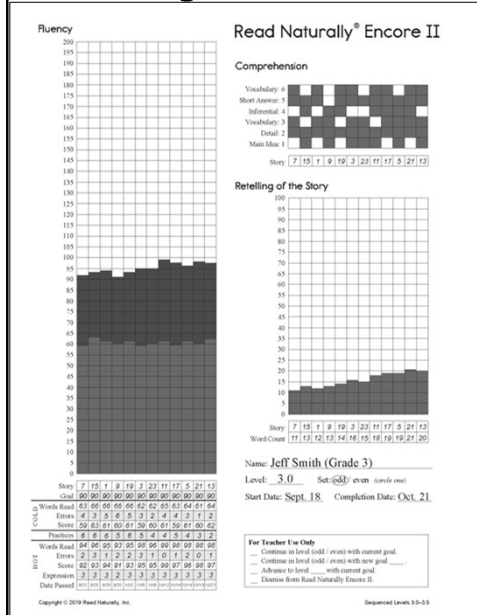
Jeff  
3<sup>rd</sup> Grade

Ask:

- Has Jeff completed 12 or 24 stories in the level?
- What is Jeff's long-term benchmark fluency goal?
- Is Jeff closer to meeting his long-term benchmark rate or level?

Note: Self-times for cold timing. Has a positive attitude and works well.

## Should we raise Jeff's goal or level?



Ask:

- Has Jeff completed 12 or 24 stories in the level?
- What is Jeff's long-term benchmark fluency goal?
- Is Jeff closer to meeting his long-term benchmark rate or level?

## Monitoring Student Performance

### What is Jeff's new goal?



Jeff  
3<sup>rd</sup> Grade

Previous goal: 90

New goal:

## Does John need more challenge?



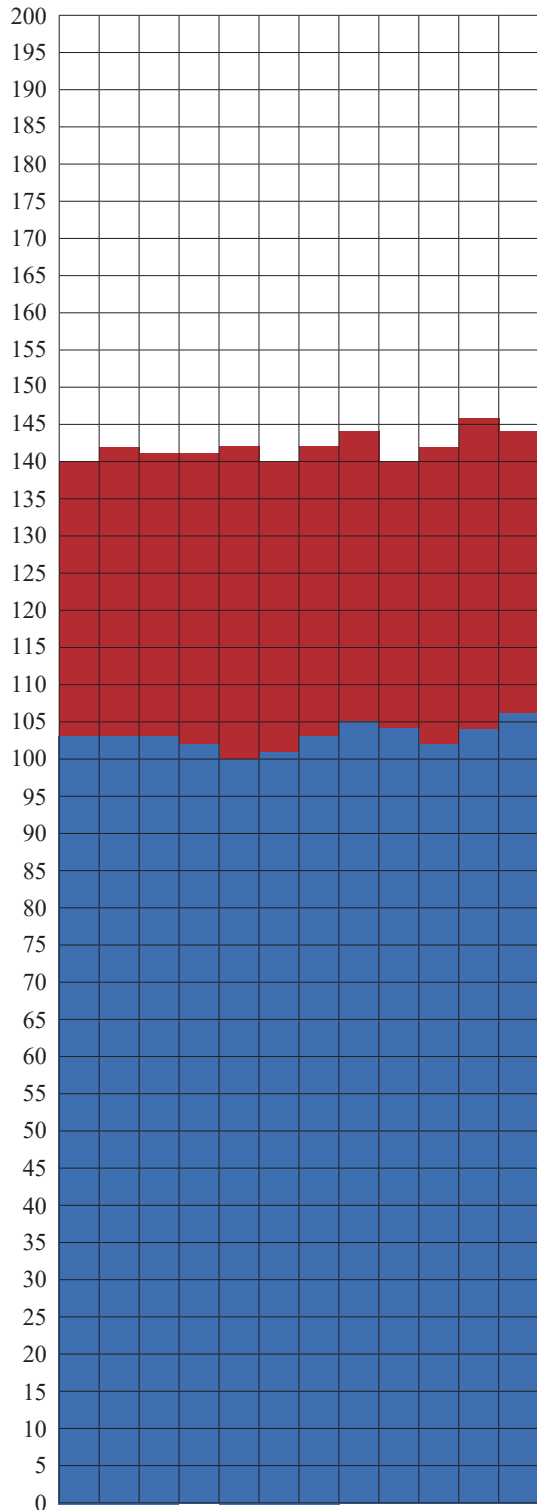
John  
6<sup>th</sup> Grade

Ask:

- Has John's average cold-timing score improved?
- Has John's average hot-timing score improved?
- Has John's average hot-timing score exceeded his goal by ten or more?
- Has John's average quiz score improved?
- Has John's average number of practices decreased?

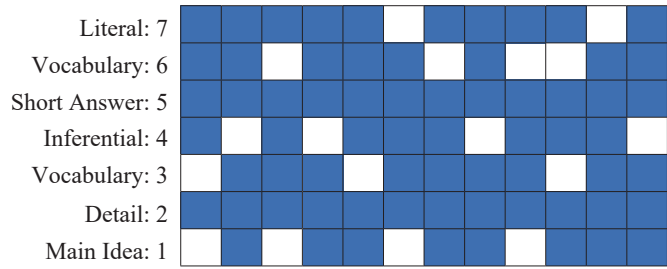
Note: Often makes too many errors to pass on first attempt.

# Fluency



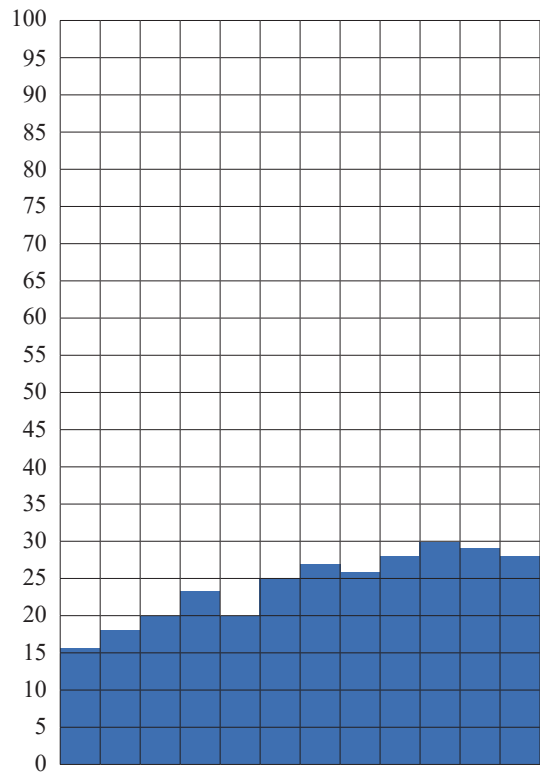
# Read Naturally® Encore II

## Comprehension



Story	11	17	3	15	1	19	7	23	5	21	13	9
-------	----	----	---	----	---	----	---	----	---	----	----	---

## Summary of the Story



Story	11	17	3	15	1	19	7	23	5	21	13	9
Word Count	16	18	20	23	20	25	27	26	28	30	29	28

Story	11	17	3	15	1	19	7	23	5	21	13	9	
Goal	140	140	140	140	140	140	140	140	140	140	140	140	
COLD	Words Read	108	107	107	105	105	103	106	109	107	104	107	109
	Errors	5	4	4	3	5	2	3	4	3	2	3	3
	Score	103	103	103	102	100	101	103	105	104	102	104	106
Practices	7	6	5	4	6	8	5	7	6	4	8	6	
HOT	Words Read	142	145	142	141	143	141	144	144	143	142	147	146
	Errors	2	3	1	0	1	1	2	0	3	0	1	2
	Score	140	142	141	141	142	140	142	144	140	142	146	144
	Expression	2	2	2	2	2	2	2	2	2	2	2	2
Date Passed	9/23	9/25	9/28	9/30	10/1	10/4	10/8	10/12	10/15	10/16	10/19	10/20	

Name: John Anderson (Grade 6)

Level: 5.0 Set: (odd) / even (circle one)

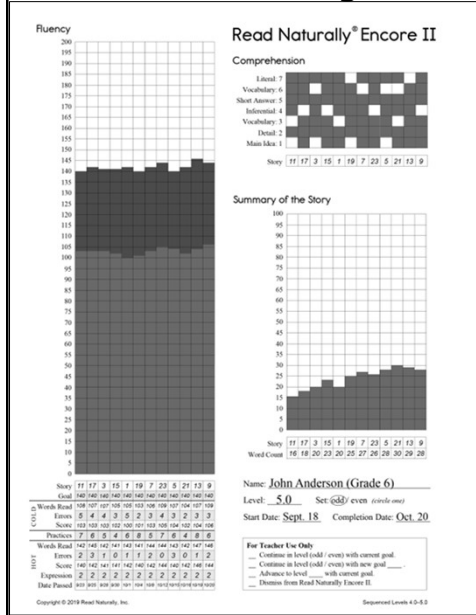
Start Date: Sept. 18 Completion Date: Oct. 20

### For Teacher Use Only

- Continue in level (odd / even) with current goal.
- Continue in level (odd / even) with new goal \_\_\_\_ .
- Advance to level \_\_\_\_ with current goal.
- Dismiss from Read Naturally Encore II.



## Does John need more challenge?



Ask:

- Has John's average cold-timing score improved?
- Has John's average hot-timing score improved?
- Has John's average hot-timing score exceeded his goal by ten or more?
- Has John's average quiz score improved?
- Has John's average number of practices decreased?

## Monitoring Student Performance

### Should we raise John's goal or level?



**John**  
6<sup>th</sup> Grade

Current

Level: 5.0

Goal: 140

Note: Often makes too many errors to pass on first attempt.

## Does Janelle need more challenge?



Janelle  
4<sup>th</sup> Grade

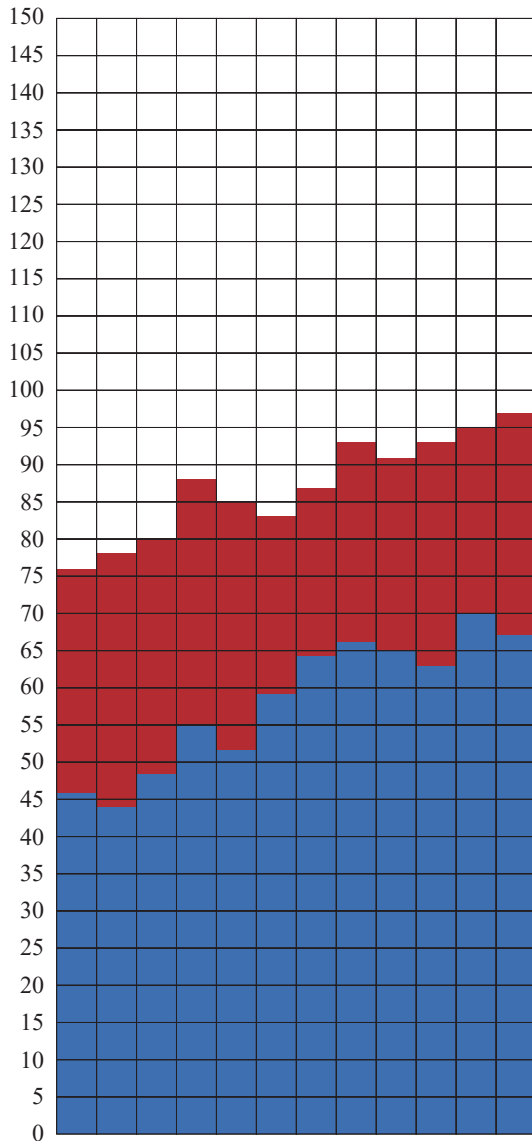
Ask:

- Has Janelle's average cold-timing score improved?
- Has Janelle's average hot-timing score improved?
- Has Janelle's average hot-timing score exceeded her goal by ten or more?
- Has Janelle's average quiz score improved?
- Has Janelle's average number of practices decreased?

Note: Teacher present for cold timings. Goal was raised from 75 to 85. Showing signs of boredom.

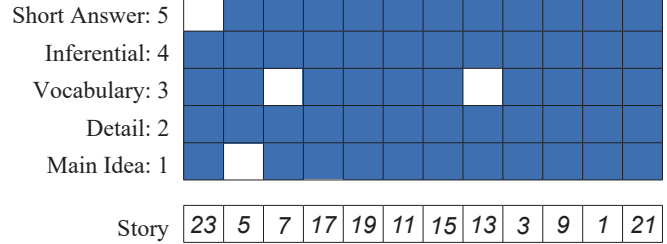
# Read Naturally® Encore II

## Fluency

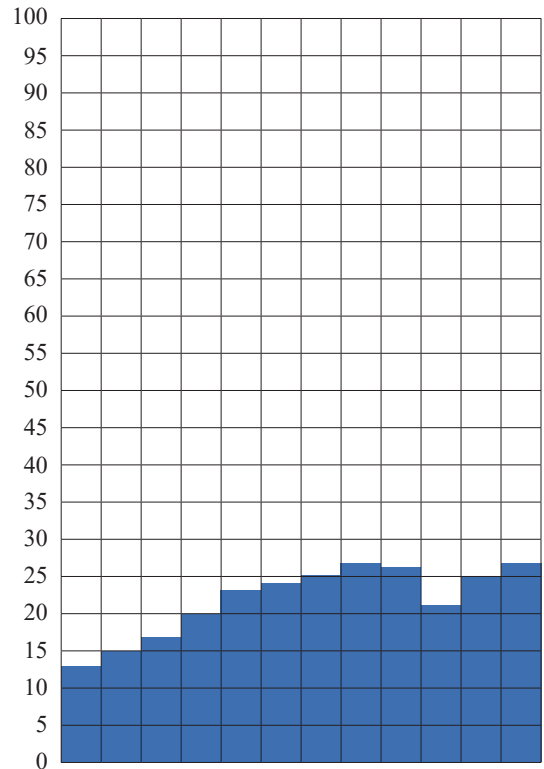


Story	23	5	7	17	19	11	15	13	3	9	1	21	
Goal	75	75	75	75	75	75	85	85	85	85	85	85	
COLD	Words Read	51	46	48	57	55	61	68	68	66	64	72	69
	Errors	5	2	0	2	3	2	4	2	1	1	2	2
	Score	46	44	48	55	52	59	64	66	65	63	70	67
Practices	6	6	7	5	5	5	5	5	3	3	4	3	
HOT	Words Read	78	81	81	90	87	83	88	95	92	94	95	97
	Errors	2	3	1	2	2	0	1	2	1	1	0	0
	Score	76	78	80	88	85	83	87	93	91	93	95	97
	Expression	2	2	2	2	3	3	3	3	3	3	3	3
Date Passed	9/22	9/24	9/26	9/29	10/1	10/3	10/7	10/10	10/13	10/14	10/17	10/20	

## Comprehension



## Retelling of the Story



Story	23	5	7	17	19	11	15	13	3	9	1	21
Word Count	13	15	17	20	23	24	25	27	26	21	25	27

Name: Janelle Stack (Grade 4)

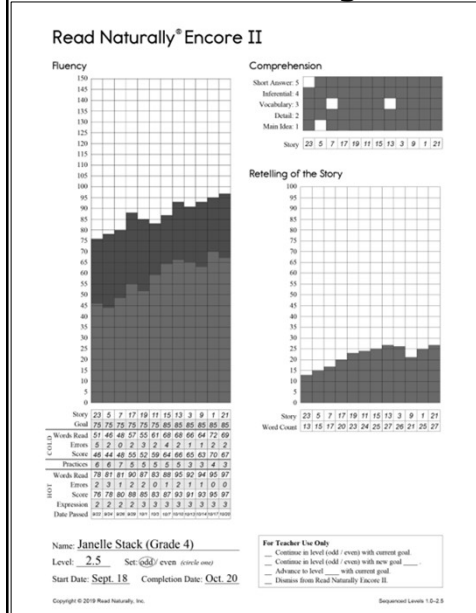
Level: 2.5 Set: (odd) / even (circle one)

Start Date: Sept. 18 Completion Date: Oct. 20

### For Teacher Use Only

- Continue in level (odd / even) with current goal.
- Continue in level (odd / even) with new goal \_\_\_\_.
- Advance to level \_\_\_\_ with current goal.
- Dismiss from Read Naturally Encore II.

## Does Janelle need more challenge?



Ask:

- Has Janelle's average cold-timing score improved?
- Has Janelle's average hot-timing score improved?
- Has Janelle's average hot-timing score exceeded her goal by ten or more?
- Has Janelle's average quiz score improved?
- Has Janelle's average number of practices decreased?

## Monitoring Student Performance

### Should we raise Janelle's goal or level?



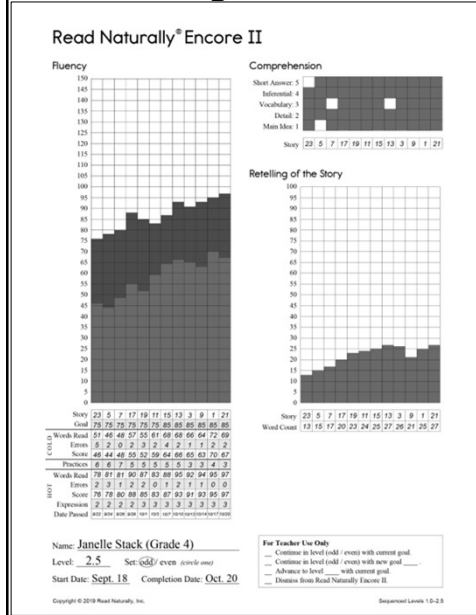
Janelle  
4<sup>th</sup> Grade

Ask:

- Has Janelle completed 12 or 24 stories in the level?
- What is Janelle's long-term benchmark fluency goal?
- Is Janelle closer to meeting her long-term benchmark rate or level?

Note: Teacher present for cold timings. Goal was raised from 75 to 85. Showing signs of boredom.

## Should we raise Janelle's goal or level?



Ask:

- Has Janelle completed 12 or 24 stories in the level?
- What is Janelle's long-term benchmark fluency goal?
- Is Janelle closer to meeting her long-term benchmark rate or level?

## Monitoring Student Performance

### What is Janelle's new level?



Janelle  
4<sup>th</sup> Grade

Previous level: 2.5

New level:



## Resources

- Knowledgebase Topics
- Videos
- Free Webinars



phone: 800.788.4085  
email: [info@readnaturally.com](mailto:info@readnaturally.com)  
website: [readnaturally.com](http://readnaturally.com)

## Questions?

